

MICHAEL G. ADAMS  
SECRETARY OF STATE  
COMMONWEALTH OF KENTUCKY  
BY Kandi Adkins

RESOLUTION NO. 12-014  
CITY OF STANTON, KENTUCKY

**A RESOLUTION ADOPTING A MODERN AND ACCURATE  
LEGAL DESCRIPTION OF TERRITORY PREVIOUSLY  
ANNEXED BY ORDINANCE**

**WHEREAS**, the City of Stanton, Kentucky has enacted numerous ordinances annexing property into the corporate limits of the City of Stanton; and

**WHEREAS**, each individual annexation contains a prior survey often prepared by now unknown individual, and further references documentation that is no longer in existence; and

**WHEREAS**, the City of Stanton wishes to provide a modern, accurate, easily identifiable legal description reflecting bearings and coordinates based upon the state plane coordinate systems, including relevant GPS and GIS data, same having been certified by a professional land surveyor for each prior annexation; and

**WHEREAS**, the City of Stanton wishes to comply with the requirements of Amended KRS 81A.470 effective July 13, 2004; and

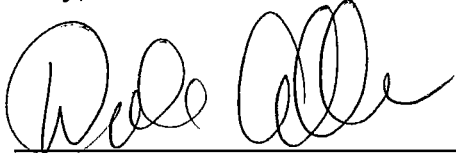
**WHEREAS**, the City of Stanton does not intend to amend or replace its prior ordinance annexing, but rather to interpret the defined boundaries of the territory previously annexed and adopt a modern and accurate legal description of territory previously annexed,

**NOW THEREFORE, BE IT RESOLVED BY THE CITY COUNCIL OF THE CITY OF STANTON, KENTUCKY:**

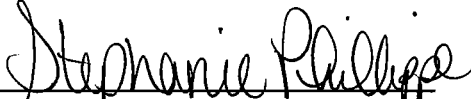
**SECTION 1.** That the City Council of the City of Stanton, Kentucky hereby adopts the following legal description, and the plat attached hereto as prepared by

Rodney A. Hall, a Professional Land Surveyor No. 2841 by new survey as an accurate depiction of the property previously annexed into the corporate city limits of the City of Stanton by Ordinance 01-02 dated February 14, 2002, (a copy of which is attached hereto as "Exhibit A") and hereby adopts said new legal description, (attached hereto as "Exhibit B" and incorporated by reference into this Resolution), and the accompanying plat as the official legal description and plat to be adopted by the City for all purposes when referencing this prior annexation. See also Plat of record at Plat Cabinet 3, Slide \_\_\_\_\_, records of the Powell County Clerk's Office.

Motion made by Dixie Lockard; seconded by Linville Bellamy.  
The vote was 6 in favor; and 0 opposed, at the regular meeting of the City Council for the City of Stanton, held on the 12<sup>th</sup> day of July, 2012.

  
\_\_\_\_\_  
DALE ALLEN, Mayor  
City of Stanton

ATTEST:

  
\_\_\_\_\_  
Stephanie Phillippe, City Clerk  
City of Stanton

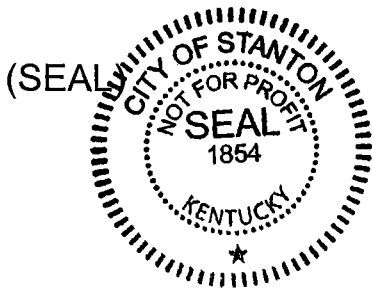
## City Clerk's Certification

I, Stephanie A. Faulkner, City Clerk of the City of Stanton do hereby certify that, the forgoing Resolution No. 12-014 is a true, correct and complete copy duly adopted by the City Commission at a duly convened meeting held on 07/12/2012, all as appears in the official records of said City.

Given under my hand this 1<sup>st</sup> day of February, 2018.

*Stephanie Faulkner*

City Clerk



## **Exhibit B**

### **Deed Description**

Ordinance No. 01-02

City of Stanton, KY

A certain Parcel of land lying on East Pendleton Street and contiguous to the City of Stanton, KY and being more particularly described as follows:

The POINT OF BEGINNING at Kentucky State Plane (NAD 83) Single Zone Coordinate of Northing=3836092.27 and Easting=5473257.25, said point lying on the North right-of-way of the Mountain Parkway and the existing Corporate Boundary Line of Stanton, KY, (said point being S 84°01'02" W, 2460.66' from the Point where the Corporate Boundary Line and Right-of-Way become contiguous); thence leaving the Corporate Boundary Line and with a line crossing the Mountain Parkway and then with the Kentucky Transportation Cabinet Lot S 05°42'00" E, a distance of 766.14'; thence continuing with the line of the Kentucky Transportation Cabinet S 46°28'11" W, a distance of 163.50'; thence N 89°42'00" W, a distance of 391.51'; thence S 73°00'51" W, a distance of 91.33'; thence S 56°15'33" W, a distance of 171.97'; thence N 63°20'08" W, a distance of 192.86'; thence continuing with the line of the Kentucky Transportation Cabinet and crossing the Mountain Parkway N 04°24'35" W, a distance of 816.71' to a point in the north right-of-way line of the Mountain Parkway and the existing city limit line of Stanton, KY; thence with the north right-of-way line of the Bert T. Combs Mountain Parkways and the existing Corporate Boundary Line of the City of Stanton N 84°01'02" E, a distance of 904.37' to the POINT OF BEGINNING; said described tract containing 17.82 Acres, more or less.

## **Statement of Resources**

The Property described above was computed using survey information from a Map of Stanton prepared and certified by Blake Adams, PLS on 11/13/2005. Record Plats and deeds from the Powell County Clerk's Office as well as the description contained in Ordinance No. 01-02 were also utilized.

Ordinance No. 01-02

Coordinates and Bearings are Kentucky State Plane (NAD 83) Single Zone. The P.O.B. Coordinate was derived from tying to the KRS 81.025 information available from the Kentucky Secretary of State's Mapping of the City of Stanton, KY Corporate Boundary Line and available on the Internet at KYGEONET and/or the Kentucky Secretary of State's Website.



*Rodney A. Hall*  
Signature

2841  
PLS Number

10/15/2012  
Date

**SURVEYOR'S CERTIFICATION**

I hereby certify that this plat was prepared by me or under by direct supervision, and that all information included on this plat is true and correct to the best of my knowledge and belief. The information contained here was computed for the City of Stanton, Ky, Ordinance No. 01-02. This plat depicts an annexation of a tract or parcel of land contiguous to the existing corporate limits of the City of Stanton, Kentucky. This plat does not represent an actual survey on the ground and is prepared for informational purposes only. No monuments were set or verified in preparation of this plat.

STATE OF KENTUCKY  
 RODNEY A. HALL  
 2841  
 LICENSED  
 PROFESSIONAL  
 LAND SURVEYOR

*Rodney A. Hall*  
 Signature

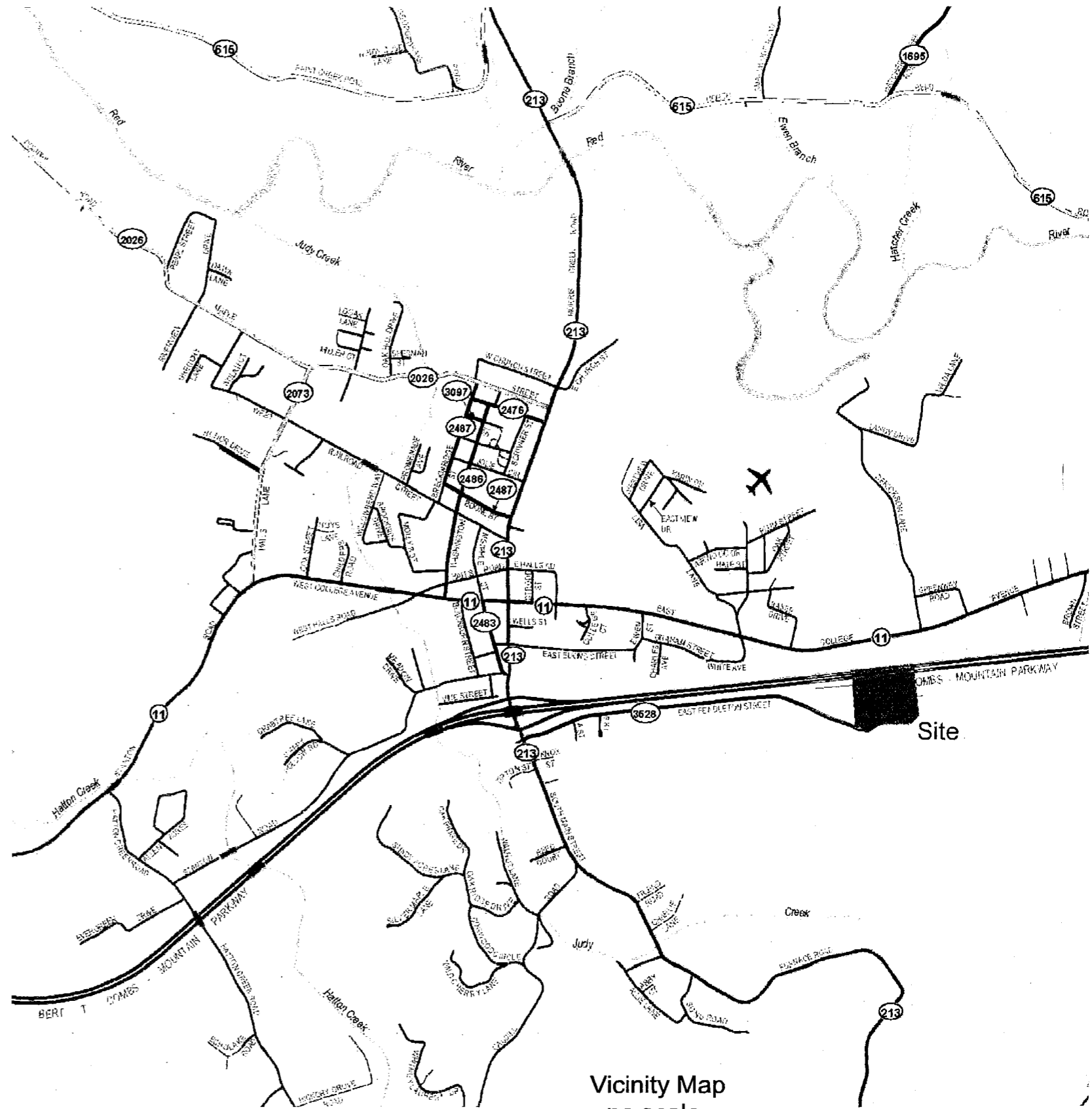
2841  
 PLS Number

10/15/2012  
 Date

**Statement of Resources**

The Property described on this Plat was computed using survey information from a Map of Stanton prepared and certified by Blake Adams, PLS on 11/13/2005. Record PLATS and deed from the Powell County Clerk's Office and the description contained in Ordinance No. 01-02 were also utilized.

Coordinates and Bearings are Kentucky State Plane (NAD 83) Single Zone. The P.O.B. Coordinate was derived from tying to the information available from the Kentucky Secretary of State's Mapping of City Corporate Boundaries in the state of Kentucky and available on the Internet at KYGEONET and/or the Kentucky Secretary of State's Website.

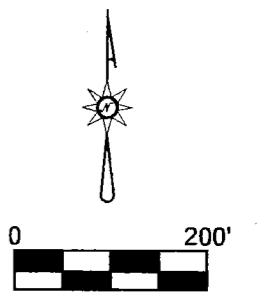
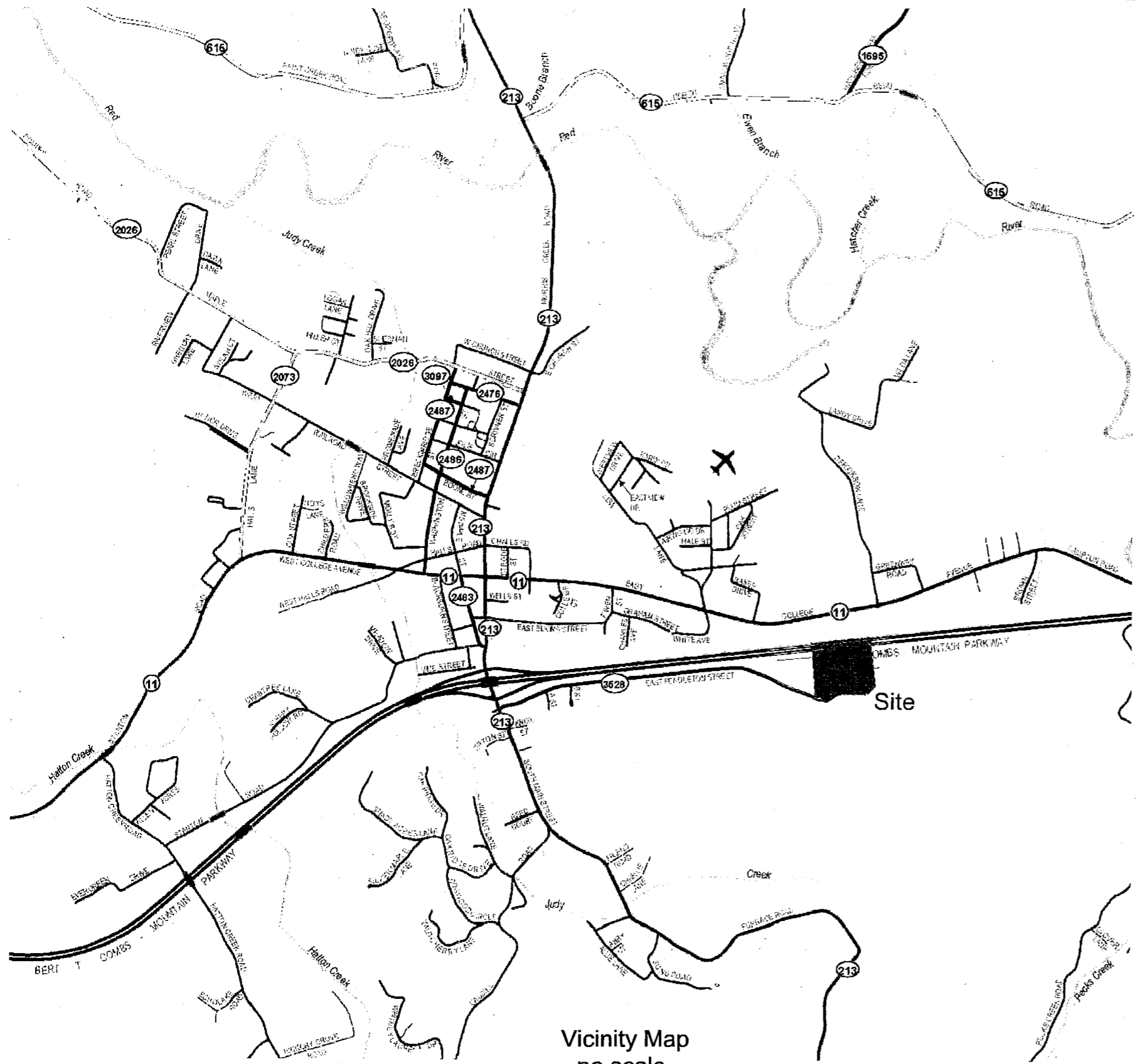


Vicinity Map  
 --no scale--

KRS 81.045(Filed 05/11/1981)(Existing Stanton Corporate Boundary)

N 84°01'02" E  
 904.37'

P.O.B. KF



Vicinity Map  
--no scale--

KRS 81.045(Filed 05/11/1981)(Existing Stanton Corporate Boundary)

N 84°01'02" E  
904.37'

P.O.B.

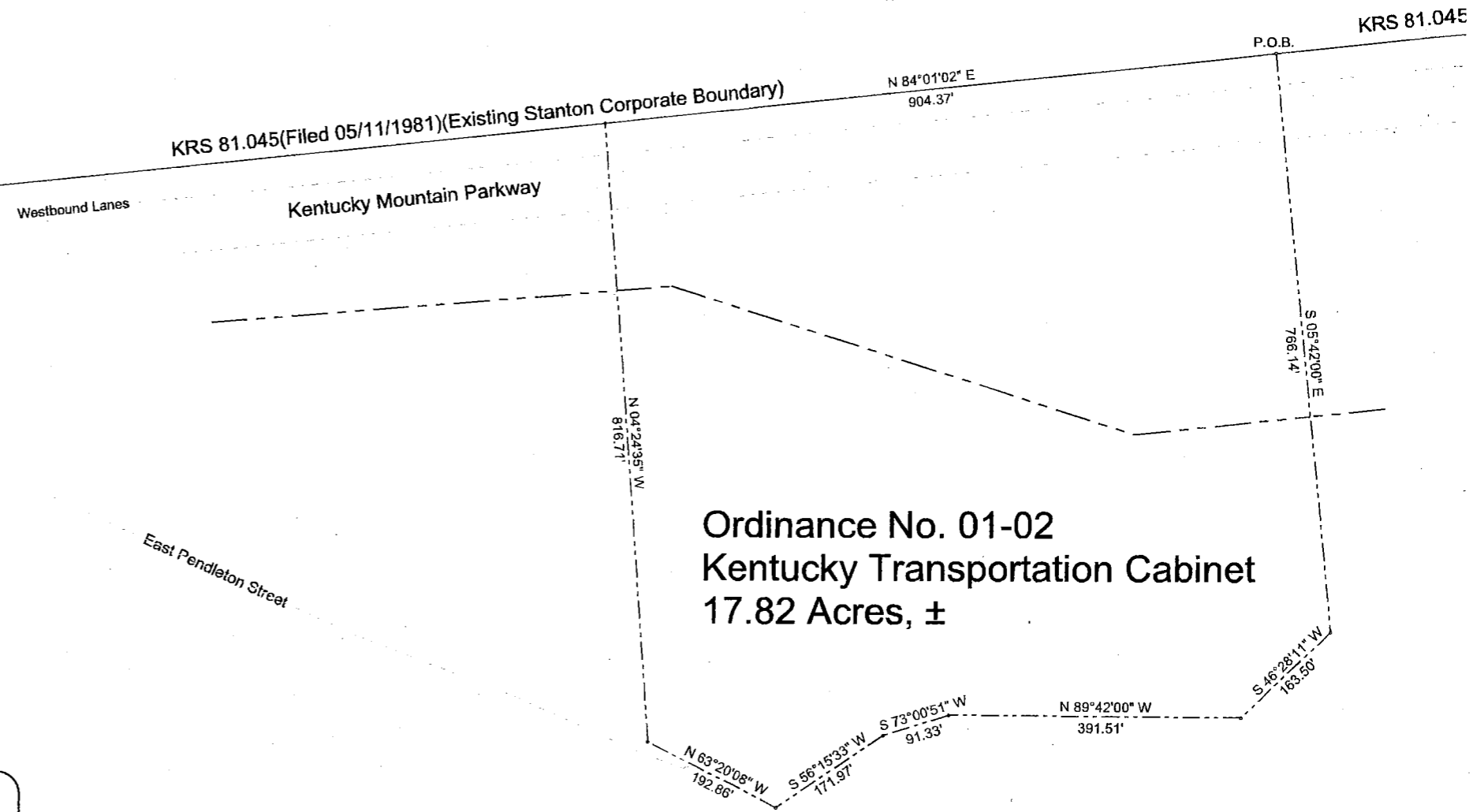
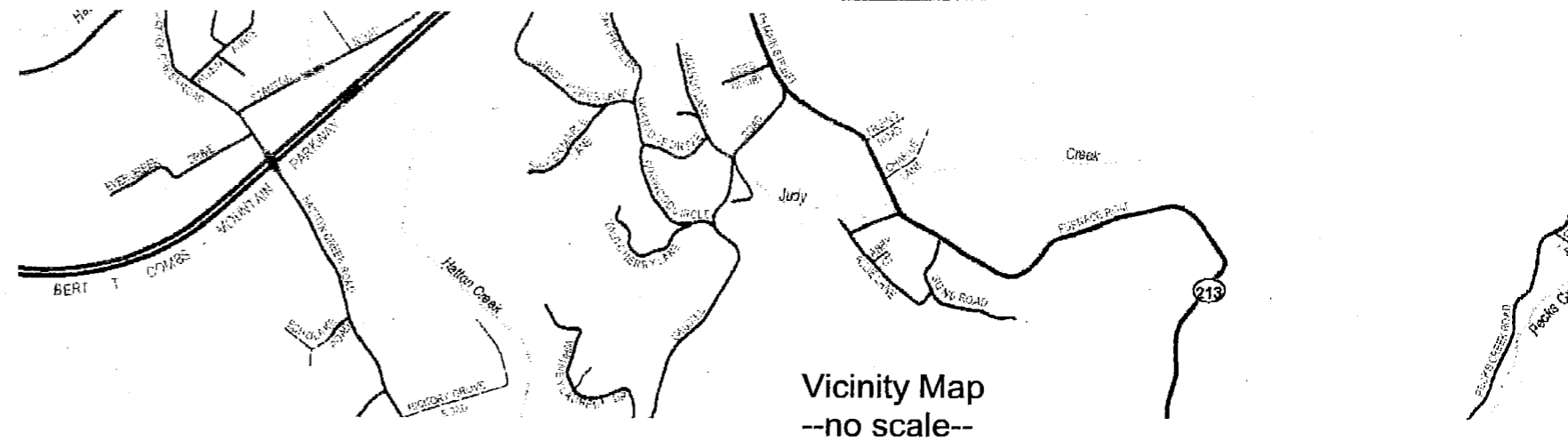
KRS 81.045(Filed 05/11/1981)(Existing Stanton Corporate Boundary) S 84°01'02" W  
2460.66'

Eastbound Lanes

Statement of Resources

The Property described on this Plat was computed using survey information from a Map of Stanton prepared and certified by Blake Adams, PLS on 11/13/2005. Record PLATS and deed from the Powell County Clerk's Office and the description contained in Ordinance No. 01-02 were also utilized.

Coordinates and Bearings are Kentucky State Plane (NAD 83) Single Zone. The P.O.B. Coordinate was derived from tying to the information available from the Kentucky Secretary of State's Mapping of City Corporate Boundaries in the state of Kentucky and available on the Internet at KYGEONET and/or the Kentucky Secretary of State's Website.



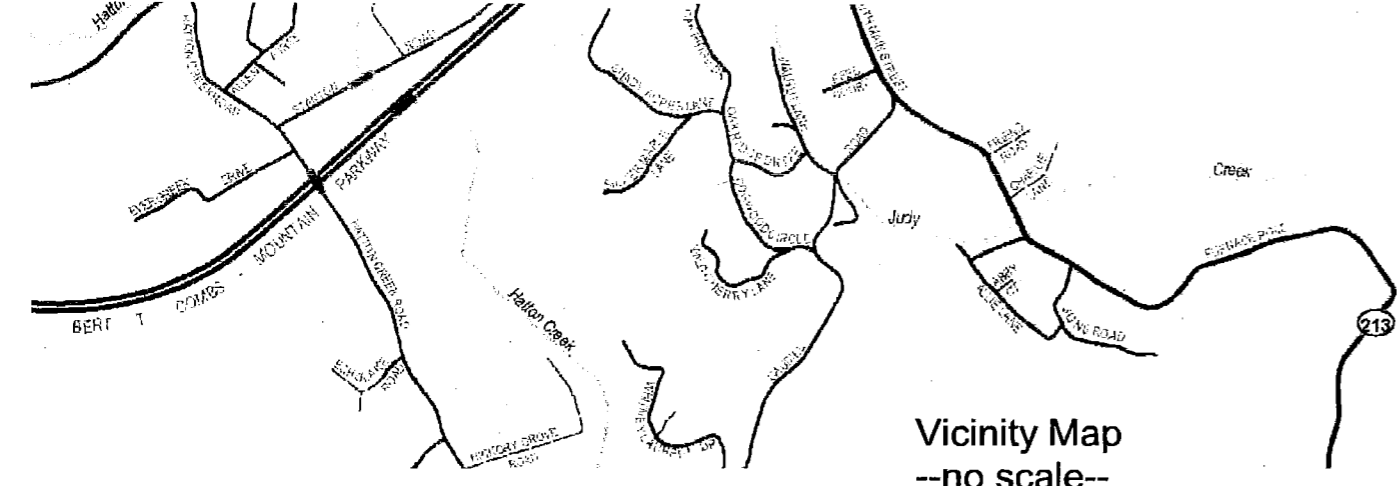
**Ordinance No. 01-02**  
**Kentucky Transportation Cabinet**  
**17.82 Acres, ±**

Jerry L. Miller, et. al.  
 DB 131, Page 500

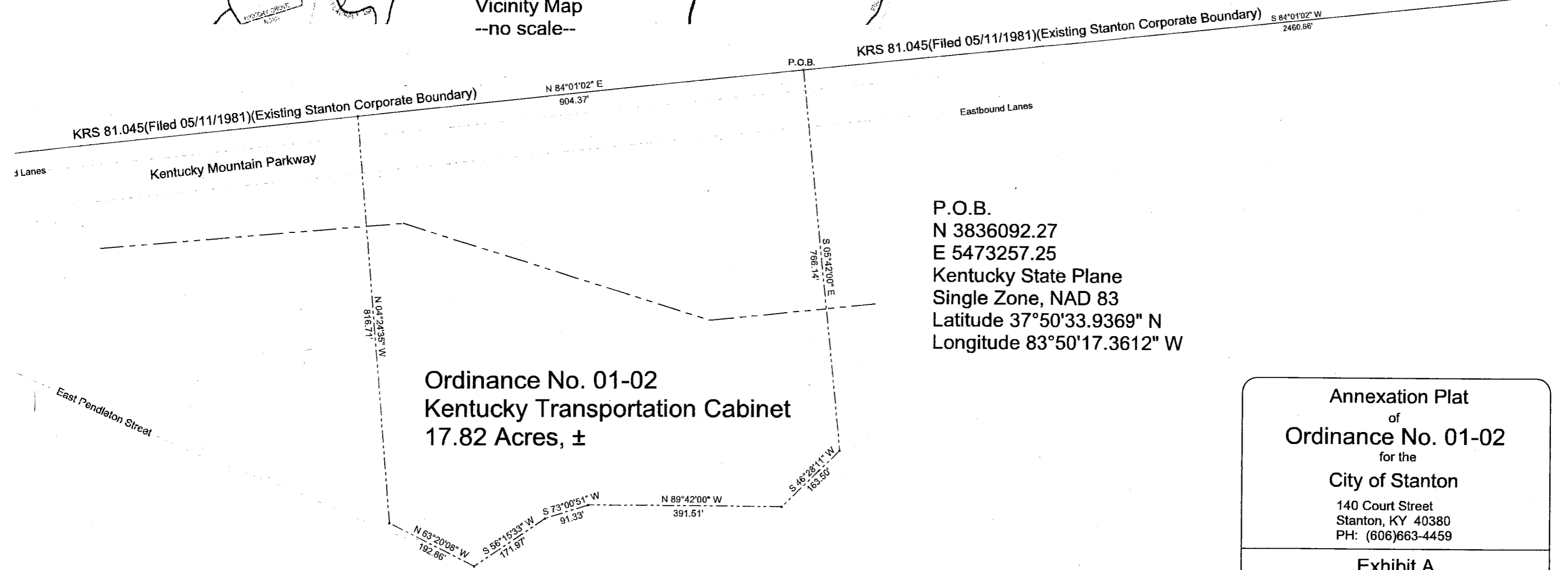
**LEGEND**

P.O.B.=Point of Beginning

- Ordinance Line for 01-02 and/or Property Line
- Property Line and/or Right of Way Line
- Existing Corporate Boundary Per 05/11/1981 Filing Centerline



Vicinity Map  
--no scale--



Jerry L. Miller, et. al.  
DB 131, Page 500

**Annexation Plat**  
of  
**Ordinance No. 01-02**  
for the  
**City of Stanton**  
140 Court Street  
Stanton, KY 40380  
PH: (606)663-4459

---

**Exhibit A**

---

Hall Mapping Services, LLC  
c/o Rodney A. Hall  
1053 Frames Branch Road  
Clay City, KY 40312-9624  
PH: (606)663-8231

---

FILE NAME ON01-02.TRV		
SCALE 200 Ft/In	DATE 10-15-2012	DRAWN BY RAH
JOB 11-075	REVISION 2/1	SHEET 1/1