

RECEIVED AND FILED
DATE October 13, 2020

MICHAEL G. ADAMS
SECRETARY OF STATE
COMMONWEALTH OF KENTUCKY

RESOLUTION NO. 12-015
CITY OF STANTON, KENTUCKY

BY Handie Adams A RESOLUTION ADOPTING A MODERN AND ACCURATE
LEGAL DESCRIPTION OF TERRITORY PREVIOUSLY
ANNEXED BY ORDINANCE

WHEREAS, the City of Stanton, Kentucky has enacted numerous ordinances annexing property into the corporate limits of the City of Stanton; and

WHEREAS, each individual annexation contains a prior survey often prepared by now unknown individual, and further references documentation that is no longer in existence; and

WHEREAS, the City of Stanton wishes to provide a modern, accurate, easily identifiable legal description reflecting bearings and coordinates based upon the state plane coordinate systems, including relevant GPS and GIS data, same having been certified by a professional land surveyor for each prior annexation; and

WHEREAS, the City of Stanton wishes to comply with the requirements of Amended KRS 81A.470 effective July 13, 2004; and

WHEREAS, the City of Stanton does not intend to amend or replace its prior ordinance annexing, but rather to interpret the defined boundaries of the territory previously annexed and adopt a modern and accurate legal description of territory previously annexed,

NOW THEREFORE, BE IT RESOLVED BY THE CITY COUNCIL OF THE CITY OF STANTON, KENTUCKY:

SECTION 1. That the City Council of the City of Stanton, Kentucky hereby adopts the following legal description, and the plat attached hereto as prepared by

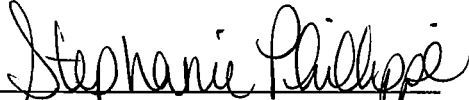
Rodney A. Hall, a Professional Land Surveyor No. 2841 by new survey as an accurate depiction of the property previously annexed into the corporate city limits of the City of Stanton by Ordinance 003-5-8 dated June 12, 2003, (a copy of which is attached hereto as "Exhibit A") and hereby adopts said new legal description, (attached hereto as "Exhibit B" and incorporated by reference into this Resolution), and the accompanying plat as the official legal description and plat to be adopted by the City for all purposes when referencing this prior annexation. See also Plat of record at Plat Cabinet 3, Slide _____, records of the Powell County Clerk's Office.

Motion made by Pam Tipton; seconded by Margarita Arnett.
The vote was 6 in favor, and 0 opposed, at the regular meeting of the City Council for the City of Stanton, held on the 12th day of July, 2012.



DALE ALLEN, Mayor
City of Stanton

ATTEST:



Stephanie Phillippe, City Clerk
City of Stanton

City Clerk's Certification

I, Stephanie A. Faulkner, City Clerk of the City of Stanton do hereby certify that, the forgoing Resolution No. 12-015 is a true, correct and complete copy duly adopted by the City Commission at a duly convened meeting held on 07/12/2012, all as appears in the official records of said City.

Given under my hand this 1st day of February, 2018.

Stephanie Faulkner

City Clerk



Kentucky e-Clearinghouse Map Output

KY e-Clearinghouse Map Output



Overview

Symbol

- Dams
- ⊕ USGS Gaging Stations
- ☼ Springs
- Water Tanks
- Non-Community Points
- ◆ Water Pumps
- Pump Stations
- ⊕ Public Well Sources
- ▲ Surface Sources
- Meters
- Purchase Source Points
- ⊕ Water Treatment Plants
- ⊕ Proposed Water Project - Point
- ◆ Proposed Sewer Improvements
- Wastewater Treatment Plant
- ▲ WWTP Outfalls
- Package Treatment Plants
- Lift Stations
- KIMOP Points
- ⊕ City Points
- ⊕ Proposed Water Project - lines
- ~ Water Lines
- ~ Proposed Sewer Extensions
- ~ Sewer Lines

This site was created and is hosted by COTIDIGI (2006)

Kentucky e-Clearinghouse Map Output

KY e-Clearinghouse Map Output



Overview

Symbol

- Dams
- ⊕ USGS Gaging Stations
- ⊙ Springs
- ⊙ Water Tanks
- Non-Community Points
- ◆ Water Pumps
- Pump Stations
- ⊙ Public Well Sources
- ▲ Surface Sources
- Meters
- ⊕ Purchase Source Points
- ⊕ Water Treatment Plants
- ⊙ Proposed Water Project - Point
- Proposed Sewer Improvements
- Wastewater Treatment Plant
- ▲ WWTP Outfalls
- Package Treatment Plants
- Lift Stations
- ⊕ KIMOP Points
- ⊙ City Points
- ⊕ Proposed Water Project - lines
- ~ Water Lines
- ~ Proposed Sewer Extensions
- ~ Sewer Lines

This site was created and is hosted by CO/IBG (2008)



Exhibit B

Deed Description

Ordinance No. 03-5-8

City of Stanton, KY

A certain Parcel of land lying on Derickson Lane and contiguous to the City of Stanton, KY and being more particularly described as follows:

The POINT OF BEGINNING at Kentucky State Plane (NAD 83) Single Zone Coordinate of Northing=3837381.93 and Easting=5473250.54, said point being 20' east of Derickson Lane at the North of the old L & N railroad right of way(corner to Russell Crabtree); thence with the right of way of Derickson Lane N 31°08'18" W, a distance of 14.43' to to the City Boundary(per KRS 81.045 Filing); thence with the City Boundary S 77°42'53" W, a distance of 23.62'; thence N 30°46'40" W, a distance of 158.28'; thence N 21°54'13" W, a distance of 59.90'; thence leaving the City Boundary(per KRS 81.045 Filing) N 84°22'39" E, a distance of 20.84' to an IPC at the Right-of Way of Derickson Lane and the remaining property of Enoch Gaylord Thomas IV; thence with said Thomas N 84°22'39" E, a distance of 230.14' to an IPC; thence S 27°49'31" E, a distance of 186.87'to the City Boundary(per KRS 81-045 Filing); thence crossing the City Boundary continuing with the line of Thomas S 27°49'31" E, a distance of 45.70' to an IPC at the North right-of-way of the old L & N railroad and the line of Russell Crabtree; thence with the line of Crabtree and railroad right-of-way S 85°27'59" W, a distance of 225.15' to the POINT OF BEGINNING; said described tract containing 1.23 Acres, more or less.

Statement of Resources

The Property described above was computed using survey information from a Map of Stanton prepared and certified by Blake Adams, PLS on 11/13/2005. Records and deeds from the Powell County Clerk's Office and the description contained in Ordinance No. 03-5-8 were also utilized.

Ordinance No. 03-5-8

Coordinates and Bearings are Kentucky State Plane (NAD 83) Single Zone. The P.O.B. Coordinate was derived from tying to the KRS 81.025 information available from the Kentucky Secretary of State's Mapping of the City of Stanton, KY Corporate Boundary Line and available on the Internet at KYGEONET and/or the Kentucky Secretary of State's Website.



Rodney A. Hall
Signature

2841
PLS Number

10/15/2012
Date

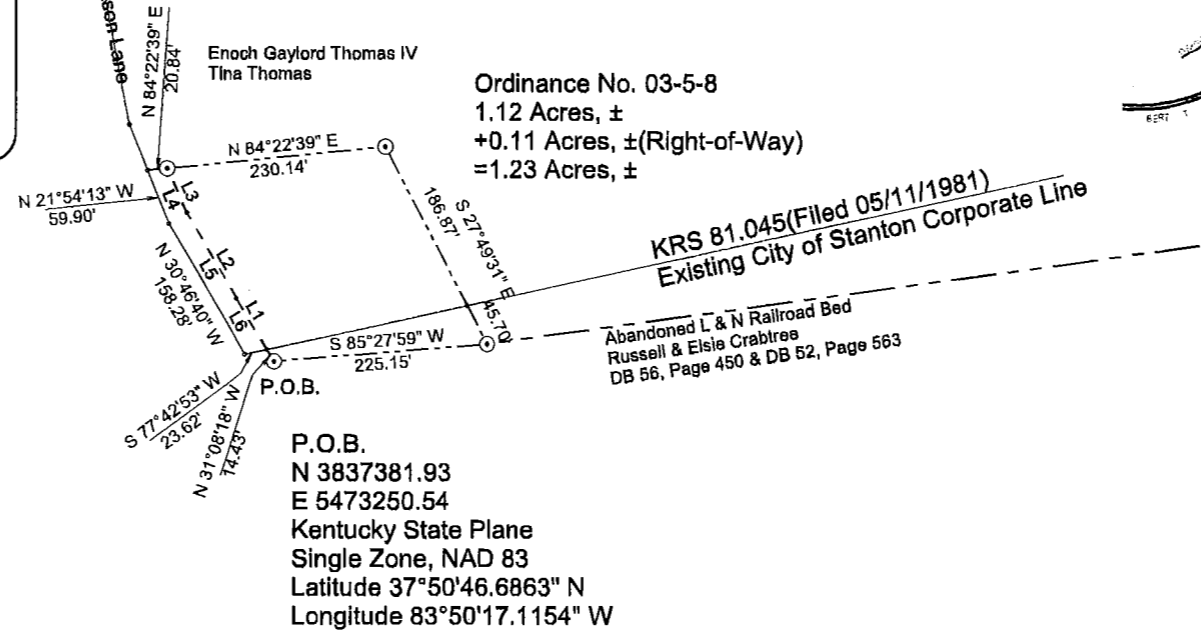
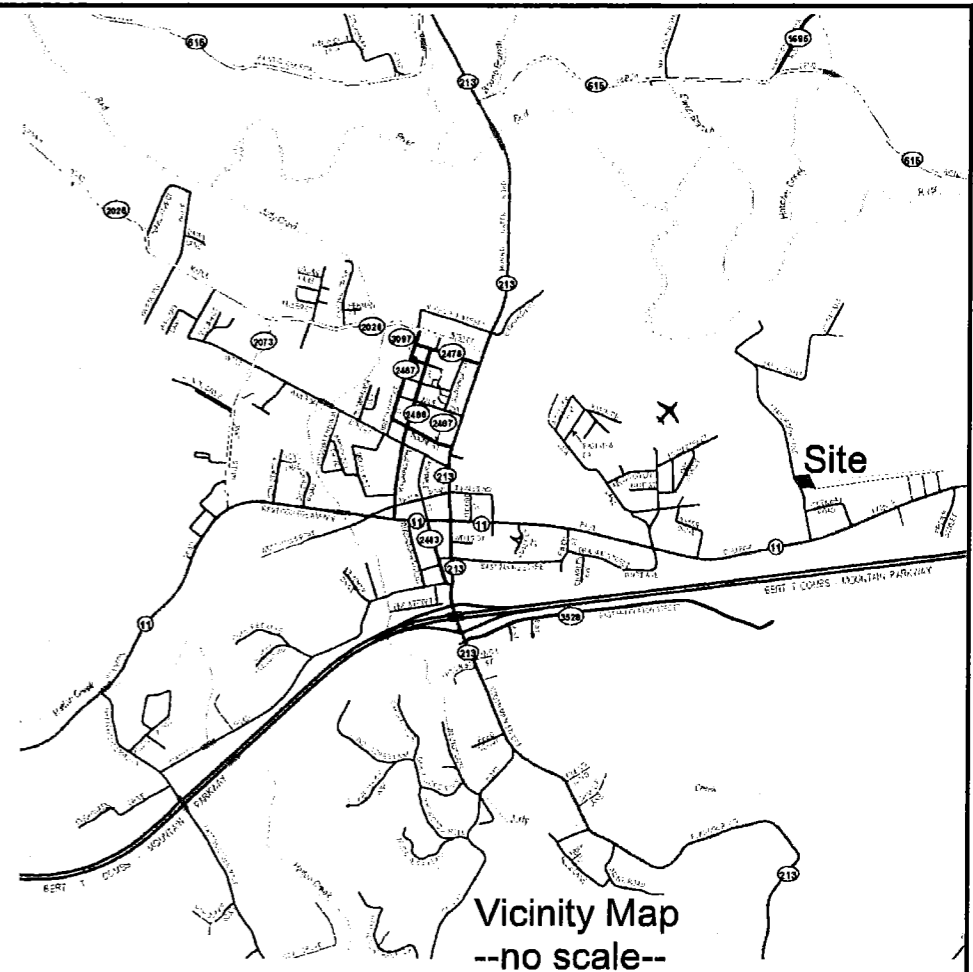
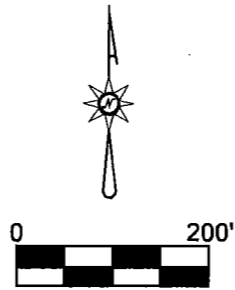
SURVEYOR'S CERTIFICATION

I hereby certify that this plat was prepared by me or under my direct supervision, and that all information included on this plat is true and correct to the best of my knowledge and belief. The information contained here was computed for the City of Stanton, Ky. Ordinance No. 03-5-8. This plat depicts an annexation of a tract or parcel of land contiguous to the existing corporate limits of the City of Stanton, Kentucky. This plat does not represent an actual survey on the ground and is prepared for informational purposes only. No monuments were set or verified in preparation of this plat.

STATE OF KENTUCKY
 RODNEY A. HALL
 2841
 LICENSED
 PROFESSIONAL
 LAND SURVEYOR

Rodney A. Hall 2841 10/15/2012
 Signature PLS Number Date

Line Table		
L1	N 31°08'18" W	62.06'
L2	N 30°43'08" W	103.59'
L3	N 24°00'56" W	50.80'
L4	S 24°00'56" E	50.80'
L5	S 30°43'08" E	103.59'
L6	S 31°08'18" E	62.06'



Ordinance No. 03-5-8
 1.12 Acres, ±
 +0.11 Acres, ±(Right-of-Way)
 =1.23 Acres, ±

KRS 81.045(Filed 05/11/1981)
 Existing City of Stanton Corporate Line

Abandoned L & N Railroad Bed
 Russell & Elsie Crabtree
 DB 56, Page 450 & DB 52, Page 563

P.O.B.
 N 3837381.93
 E 5473250.54
 Kentucky State Plane
 Single Zone, NAD 83
 Latitude 37°50'46.6863" N
 Longitude 83°50'17.1154" W

LEGEND

- P.O.B. = Point of Beginning
- Ordinance Line for 03-5-8 and/or Property Line
- Adjoiner Property Line
- Existing City of Stanton Corporate Line (KRS 81.045 per 05/11/1981 Filing)

Statement of Resources

The Property described on this Plat was computed using survey information from a Map of Stanton prepared and certified by Blake Adams, PLS on 11/13/2005. Record and deeds from the Powell County Clerk's Office and the description contained in Ordinance No. 03-5-8 were also utilized.

Coordinates and Bearings are Kentucky State Plane (NAD 83) Single Zone. The P.O.B. Coordinate was derived from tying to the information available from the Kentucky Secretary of State's Mapping of City Corporate Boundaries in the state of Kentucky and available on the Internet at KYGEONET and/or the Kentucky Secretary of State's Website.

Annexation Plat
 of
Ordinance No. 03-5-8
 for the
City of Stanton
 140 Court Street
 Stanton, KY 40380
 PH: (606)663-4459

Exhibit A

Hall Mapping Services, LLC
 c/o Rodney A. Hall
 1053 Frames Branch Road
 Clay City, KY 40312-9624
 PH: (606)663-8231

FILE NAME		
ON03-5-8.TRV		
SCALE	DATE	DRAWN BY
200 Ft/In	10-15-2012	RAH
JOB	REVISION	SHEET
11-075	2/1	1/1