

CITY OF TOMPKINSVILLE
ORDINANCE NUMBER 88-_____

RECEIVED

OCT 27 1988

TITLE: ANNEXATION OF HALL/INDUSTRIAL SITE PROPERTY, SECRETARY OF STATE
COMMONWEALTH OF KY

SECTION ONE: If any section, subsection, sentence, clause, phrase or portion of this ordinance that is for any reason held invalid or unconstitutional by any Court of competent jurisdiction, then, such portion, or portions, shall be deemed as separate, distinct and independent provisions and such holdings shall not effect the validity of the remaining portions thereof.

SECTION TWO: Any previous ordinance or resolution in conflict with this ordinance is hereby repealed.

SECTION THREE: This ordinance shall become effective after passage, approval and publication as required by the Kentucky Revised Statutes, and other appropriate law.

SECTION FOUR: THEREFORE, BE IT ORDAINED BY THE CITY OF TOMPKINSVILLE, KENTUCKY AS FOLLOWS:

1. The City of Tompkinsville having heretofore announced its intention to annex that property known as the Hall/Industrial site property as described in Deed Book 63, pages 405-6, of the Monroe County Clerk's records, as attached to the previous ordinance that announced said intention, and said ordinance being properly enacted and published, the City of Tompkinsville hereby consummates said annexation, 60 days from publication having elapsed.

INTRODUCED: the 8th day of September, 1988.

FIRST READING: the 9th day of September, 1988.

SECOND READING: the 13th day of October, 1988.

PASSED: the 13th day of October, 1988.

AYES: 5

NAYES: 0

ABSENT: 1

ABSTAINED: 0

APPROVED by me this 13th day of October, 1988.

Ralph D. Hagan
MAYOR, CITY OF TOMPKINSVILLE

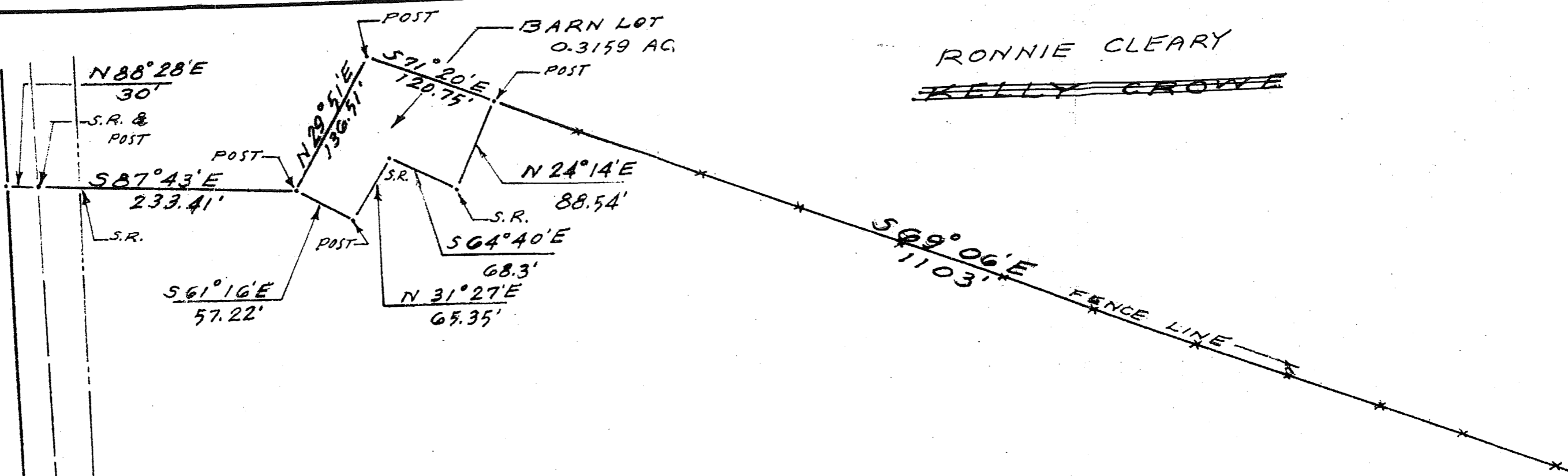
REED N. MOORE, JR.
ATTORNEY AT LAW
107 SECOND STREET - P.O. BOX 235
TOMPKINSVILLE, KY 42157-0235
(502) 487-6262

ATTESTED by me this 13th day of October, 1988.

Athalene Compton
CLERK, CITY OF TOMPKINSVILLE

PUBLISHED: the 20 day of October, 1988.

REED N. MOORE, JR.
ATTORNEY AT LAW
107 SECOND STREET - P.O. BOX 235
TOMPKINSVILLE, KY 42167-0235
(502) 487-6262



RONNIE CLEARY
~~KELLY CROWE~~

HIGHWAY 163
 1320.23'
 R LINE

CONTAINING
 42.30 ACRES
 - 0.91 AC. R/W
 41.39 ACRES, MORE
 OR
 LESS.

... was annexed by the City Council of Tompkins
 ... the Tompkins Side News

ARN LOT
0.3159 AC.
POST

RONNIE CLEARY

~~KELLY CROWE~~

24°14'E

88.54'

'E

509°06'E
1103'

FENCE LINE

CEDAR
SNAQ

DON WRIGHT

CONTAINING

42.30 ACRES

- 0.91 AC. R/W

41.39 ACRES, MORE

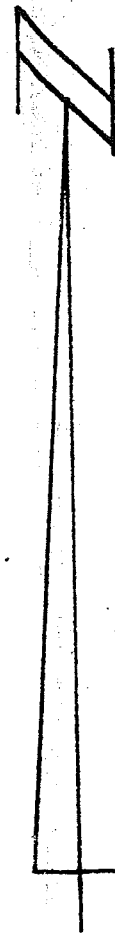
OR

LESS.

509°04'E
972.5'

WTKY

RADIO STATION



*land this plat was annexed by the City Council of Tompkinsville, Ky
was included in the Tompkinsville News*

CONTAINING

42.30 ACRES

- 0.91 AC. R/W

41.39 ACRES, MORE

OR

LESS.

KENTUCKY HIGHWAY 103
N 01° 41' W - 1320.23'

POWER LINE

TO TOMPKINSVILLE

POWER POLE
UNDER SLOPE

S 89° 42' W
17.13'

S 89° 42' W
30.0'

S 88° 38' W
1543.68'

BOBBY JOINES

This property shown on this plat was adopted by the City Council of Tompkinsville, KY by Ordinance dated October 13, 1988 and published in the Tompkinsville News October 20, 1988

Mayor Ralph T. Hagan
Ralph P. Hagan

CONTAINING

42.30 ACRES

- 0.91 AC. R/W

41.39 ACRES, MORE

OR

LESS.

property shown on this plat was annexed by the City Council of Tompkinsville, Ky
in a resolution dated October 13, 1988 and published in the Tompkinsville News
of 20, 1988

Mayor Ralph T. Hagan
Ralph T. Hagan

S 29° 04' E
972.5'

WTKY
RADIO STATION
PROPERTY

S 88° 38' W
1543.68'

LARGE
SNAG

4 COUNTY ROAD 1049

STATE OF KENTUCKY
SUE PARQUE
1401
REGISTERED
LAND SURVEYOR

BOBBY JOINES

PORTION OF BASSIE & CECIL B. HALL PROPERTY		DRAWN BY S.P.
SCALE 1"=100'	APPROVED BY TO FRANK HALL	
DATE MAY, 1988	LYING IN MONROE COUNTY, KY. JUST NORTH OF TOMPKINSVILLE.	
Sue Parque SUE PARQUE, BLS #1401		DRAWING NUMBER 1 OF 1