

CERTIFICATION: KRS 81A.470 FILINGS

I certify I am the duly qualified City Clerk of the City of Vanceburg, Kentucky, and the following 2 pages of Resolution No. (or Resolution dated) 18.08 is a true, correct and complete copy duly adopted by the City Commission at a duly convened meeting held on July 2, 2018, all as appears in the official records of said City.

WITNESS, my hand and (Seal or the Seal of said City), this 20th day of July, 20 18.

Jana Billman
(Signature of City Clerk)

(Seal)

RECEIVED AND FILED
DATE July 25, 2018

ALISON LUNDERGAN GRIMES
SECRETARY OF STATE
COMMONWEALTH OF KENTUCKY
BY Andie Adkinson

RESOLUTION 18.08

A RESOLUTION ADOPTING A MODERN AND ACCURATE
LEGAL DESCRIPTION OF TERRITORY PREVIOUSLY
ANNEXED BY ORDINANCE

Whereas, the City of Vanceburg has enacted numerous ordinances annexing property into the corporate limits of the City of Vanceburg; and

Whereas, each individual annexation contains a prior survey oft prepared by a now-unknown individual, and further references documentation that is no longer in existence; and

Whereas, the City wishes to provide a modern, accurate, easily identifiable legal description reflecting bearings and coordinates based upon the state plane coordinate system, including relevant GPS and GIS data, same having been certified by a professional land surveyor for each prior annexation; and

Whereas, the City wishes to comply with the requirements of the amended KRS 81A.470 effective July 13, 2004; and

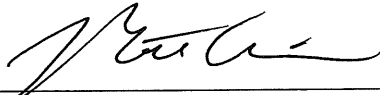
Whereas, the City does not intend to amend or replace its prior ordinance annexing, but rather to interpret the defined boundaries of the territory previously annexed and to adopt a modern and accurate legal description of territory previously annexed,

**NOW THEREFORE, BE IT RESOLVED BY THE CITY COUNCIL
OF THE CITY OF VANCEBURG, KENTUCKY:**

SECTION 1. That the City Council of the City of Vanceburg hereby adopts the legal description and a plat attached hereto as prepared by Richard L. Howerton, Kentucky Licensed Professional Land Surveyor No. 3582 by new survey as an accurate description of the property previously annexed into the corporate city limits of the City of Vanceburg by Ordinance No. 110.07 dated October 4, 1995, a copy of which is attached hereto as Exhibit "1", and hereby adopts said new legal description and Plat as the official legal description and Plat to be adopted by the City for all purposes when referencing this prior annexation.

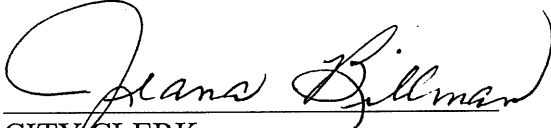
SECTION 2. This new legal description as prepared by Richard L. Howerton, a Kentucky Licensed Professional Land Surveyor No. 3582, is as set forth on the attached Exhibit A, which is incorporated herein by reference:

DONE THIS 2nd DAY OF JULY, 2018.



MAYOR

ATTEST:



CITY CLERK

**ANNEXATION BOUNDARY
CITY OF VANCEBURG SEPT 1995
Ordinance No. 110.07
9.95 Acre Tract**

Beginning at a point in the easterly R/W of the AA Highway and the southerly R/W of Shelton Drive at NAD83 Kentucky Single Zone State Plane Coordinates (FIPS: 1600) of N: 4112262.9258, E: 5613612.2874.

Thence, with the R/W of Shelton Drive, N 67°57'31" E, 337.51' to a point;

Thence, S 72°50'12" E, 99.25' to a point;

Thence, N 62°05'19" E, 67.10' to a point in the centerline of Dry Run Creek;

Thence, with the centerline of Dry Run Creek the following fourteen (14) calls:

S 0°52'10" E, 71.80' to a point;

S 6°33'58" W, 244.17' to a point;

S 3°17'31" W, 144.77' to a point;

S 6°54'21" E, 46.22' to a point;

S 1°39'24" W, 93.06' to a point;

S 29°57'03" E, 147.98' to a point;

S 16°24'54" E, 71.32' to a point;

S 9°39'50" W, 130.33' to a point;

S 14°06'20" E, 50.50' to a point;

S 28°41'12" E, 54.74' to a point;

S 5°45'57" W, 101.78' to a point;

S 42°44'00" W, 74.32' to a point;

S 28°25'55" W, 119.81' to a point;

S 31°59'39" W, 80.69' to a point;

S 70°17'08" W, 46.70' to a point;

S 87°26'38" W, 27.52' to a point;

Thence leaving Dry Run Creek, N 4°59'32" W, 34.00' to a point;

Thence, S 85°00'28" W, 77.00' to a point;

Thence, S 85°00'28" W, 26.96' to a point in the easterly R/W of the AA Highway;

Thence with the easterly R/W of the AA Highway the following six (6) calls:

N 2°55'08" W, 60.04' to a point;

N 2°53'19" W, 320.22' to a point;

N 6°18'54" W, 395.24' to a point;

N 6°18'54" W, 42.06' to a point;

N 6°18'54" W, 137.75' to a point;

N 25°27'36" W, 289.73' to a point to the point of beginning, containing 9.95 acres more or less.

Bearings and distances rotated to NAD83 Kentucky Single Zone State Plane Coordinates (FIPS: 1600).

For a more detailed description, see drawing #1402 Sheet 3 by Richard L. Howerton, P.L.S. #3582, of Howerton Engineering & Surveying in Greenup, Kentucky, dated May 2018.

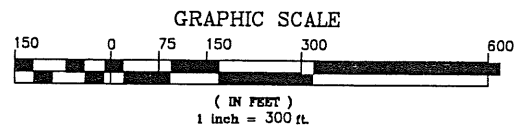
This Annexation boundary was determined from public records research of deeds & plats, and monuments located for reference and is not intended to comply with standards of practice found in 201 KAR 18: 150.

Richard Howerton 5/10/2018

Richard Howerton PLS # 3582



NAD83 KENTUCKY SINGLE ZONE,
SPCS U.S. FT. (FIPS: 1600)



NOTES:

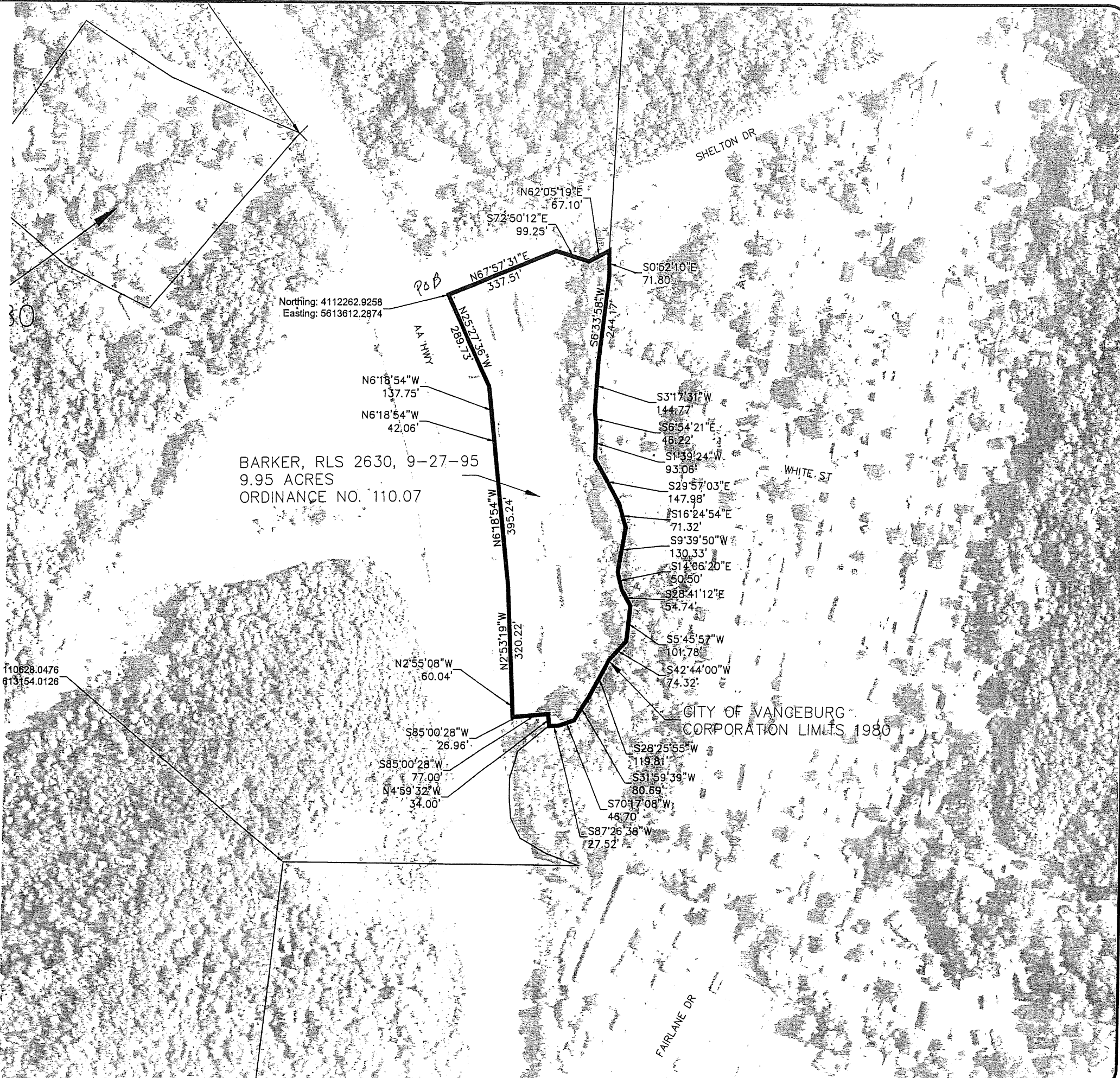
1. BEARINGS HAVE BEEN ROTATED TO NAD83 KENTUCKY SINGLE ZONE, SPCS U.S. FT. (FIPS: 1600)
2. LINES HAVE BEEN ADJUSTED FOR CLOSURE.
3. BOUNDARY DETERMINED FROM DIGITIZED MAP PROVIDED BY THE CITY OF VANCEBURG, EXISTING SURVEY PLATS, ANNEXATION MAPS AND DEEDS OF PUBLIC RECORD

STATE OF KENTUCKY
RICHARD L. HOWERTON
3582
LICENSED
LAND SURVEYOR

SURVEYOR CERTIFICATE

I hereby certify that the Annexation Boundary shown hereon is accurately shown based on public records research of deeds and plats. The determination of this Annexation Boundary is not intended to comply with Standards of Practice found in 201 KAR 18: 150.

Name of Parties: CITY of VANCEBURG Certified by: Richard Howerton Date: 5/10/2018



CITY OF VANCEBURG
ANNEXATION BOUNDARY SEPT 1995
ORDINANCE NO. 110.07

City of Vanceburg
189 Second Street
Vanceburg, KY 41179

HOWERTON
ENGINEERING &
SURVEYING PLLC
404-A MAIN STREET
GREENUP, KENTUCKY
(606) 475-5664

REVISIONS :

PRJ. NO. 444-004	DATE May 2018
SCALE 1" = 300'	DWG. NO. 1402
SHEET 3	OF 7