

I certify I am the duly qualified City Clerk of the City of Wilmore, Kentucky,  
and the following eight pages of Ordinance No. 2021-14 is a true, correct and  
complete copy duly adopted by the City Council at a duly convened meeting held  
on October 4, 2021, all as appears in the official records of said City.

WITNESS, my hand and Seal of Wilmore, this 27<sup>th</sup> day of October, 2021.

Shawn Moore  
City Clerk



RECEIVED AND FILED  
DATE November 15, 2021

\_\_\_\_\_  
MICHAEL G. ADAMS  
SECRETARY OF STATE  
COMMONWEALTH OF KENTUCKY  
BY Kandie Allison

## ORDINANCE 2021-14

### An Ordinance Establishing a Decree of Annexation of the Hereinafter Described Parcel of Land into the City of Wilmore, Kentucky

**WHEREAS**, on March 15, 2021 the City of Wilmore by and through its Council adopted an Ordinance of Intent to Annex all of the property known and described as Exhibit "A";

**WHEREAS**, no protest or petition has been filed with the Mayor of the City of Wilmore within the sixty (60) days after the date of the enactment of the Ordinance of Intent; and

**WHEREAS**, the City of Wilmore is still desirous of extending its corporate city limits by annexing the property known and described herein as Exhibit "A";

**NOW, THEREFORE BE IT ORDAINED** by the City of Wilmore, Kentucky through the City Council, its governing body that the property described herein as Exhibit "A" is annexed into the City Limits of the City of Wilmore, Jessamine County, Kentucky and a map is attached hereto and identified as Exhibit "B" in accordance with KRS 81A.420.

The provisions of this Ordinance are hereby declared to be severable and, if any section, phrase or provision shall for any reason, be declared invalid, such declaration of invalidity shall not affect the validity of the remainder of this Ordinance. All prior Municipal Orders or Ordinances or parts of any Municipal Order or Ordinance in conflict herewith are hereby repealed. This Ordinance is adopted pursuant to KRS 83A.060 in that it was introduced on September 20, 2021, and given final reading on October 4, 2021, and said Ordinance shall be in full force and effect upon the signature, recordation, and publication in accordance with KRS 81A.060 and KRS Chapter 424.

THE MOTION to accept this ordinance was made on the 20<sup>th</sup> day of September, 2021 by Councilmember Dever and seconded by Councilmember Brumfield. Voting yes: ( 6 ) Voting no: ( 0 ).

GIVEN a second reading on the 4<sup>th</sup> day of October, 2021 the motion to accept was made by Councilmember Brumfield and seconded by Councilmember Riel. Voting yes: ( 5 ) Voting no: ( 0 )

Harold L Rainwater  
Harold L Rainwater, Mayor

ATTEST:

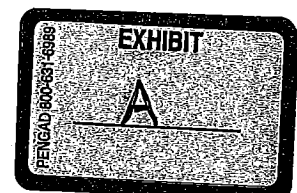
Sharon Moore  
Sharon Moore, City Clerk  
DATED: 10-4-21

ANNEXATION BOUNDARY  
BICKNELL FAMILY LIMITED PARTNERSHIP  
TRACT 1 AND TRACT 9  
DEED BOOK 333; PAGE 169

US 68 – HARRODSBURG ROAD & KY 29 – HIGH BRIDGE ROAD

**TRACT 1**

Beginning at a set mag nail with washer (#3848) in the centerline of KY 29, High Bridge Road, common corner to Asbury Estates Subdivision, thence with the centerline of KY 29, High Bridge Road, S 34°16'33" W – 442.10' to a set mag nail with washer (#3848), thence S 34°08'04" W – 548.05' to a set mag nail with washer (#3848), thence S 33°58'09" W – 628.99' to a set mag nail with washer (#3848) and S 33°53'32" W – 327.50' to a set mag nail with washer (#3848) at the centerline intersection of KY 29, High Bridge Road and Shanty Hill Road, thence leaving the centerline of KY 29, High Bridge Road and continuing with the centerline of Shanty Hill Road, N 85°33'52" W – 358.26" to a set mag nail with washer (#3848), thence N 86°43'47" W – 247.86' to a set mag nail with washer (#3848), thence N 88°50'32" W – 288.78' to a set mag nail with washer (#3848), thence S 89°49'56" W – 131.53' to a set mag nail with washer (#3848), thence N 87°35'41" W – 206.56' to a set mag nail with washer (#3848), thence N 87°28'59" W – 192.87' to a set mag nail with washer (#3848), thence N 88°32'48" W – 279.58' to a set mag nail with washer (#3848), thence N 86°42'17" W – 400.12' to a set mag nail with washer (#3848), thence N 88°11'33" W – 315.34' to a set mag nail with washer (#3848), thence N 85°55'25" W – 193.67' to a set mag nail with washer (#3848), thence N 88°19'46" W – 229.43' to a set mag nail with washer (#3848), thence N 86°13'50" W – 132.28' to a set mag nail with washer (#3848), thence N 73°21'25" W – 52.52' to a set mag nail with washer (#3848), thence N 65°35'14" W – 382.41' to a set mag nail with washer (#3848), thence N 72°41'21" W – 205.52' to a set mag nail with washer (#3848), thence N 77°13'05" W – 283.50' to a set iron pin and cap (#3848), thence leaving the centerline of Shanty Hill Road and continuing with the common line of Asbury College (D.B. 282; P. 267, D.B. 363; P. 589), N 13°54'20" W – 448.05' to a found metal post, thence N 15°30'58" E – 69.90' to a metal post, thence N 34°49'14" E – 172.25' to a set iron pin and cap (#3848), thence N 38°05'58" E – 101.62' to a set iron pin and cap (#3848), thence N 43°03'53" E – 74.56' to a set iron pin and cap (#3848), thence N 42°39'55" E – 265.77' to a set iron pin and cap (#3848), thence N 41°17'39" E – 187.59' to a set iron pin and cap (#3848), thence N 29°14'03" E – 44.12' to a set iron pin and cap (#3848), thence N 41°35'23" E – 487.50' to a set iron pin and cap (#3848), thence N 43°44'23" E – 466.99' to a set iron pin and cap (#3848), thence N 25°45'08" W – 14.59' to a set iron pin and cap (#3848), thence N 71°37'12" W – 1465.46' to a set



ASBURY

269.50

S 89°28'46" W – 369.50' to a set mag nail with washer (#3848), thence S 79°14'57" W – 127.88' to a set mag nail with washer (#3848), thence S 58°17'29" W – 97.59' to a set mag nail with washer (#3848), thence S 42°51'20" W – 120.32' to a set mag nail with washer (#3848), thence S 48°39'32" W – 61.55' to a set mag nail with washer (#3848), thence S 60°22'35" W – 83.53' to a set mag nail with washer (#3848), thence S 68°43'39" W – 118.64' to a set mag nail with washer (#3848), thence S 60°27'04" W – 81.07' to a set mag nail with washer (#3848), thence S 39°59'12" W – 88.13' to a set mag nail with washer (#3848), thence S 19°29'04" W – 86.90' to a set mag nail with washer (#3848), thence S 07°55'18" W – 136.76' to a set mag nail with washer (#3848), thence S 19°10'40" W – 116.25' to a set mag nail with washer (#3848), thence S 37°19'01" W – 82.79' to a set mag nail with washer (#3848), thence S 55°14'46" W – 86.07' to a set mag nail with washer (#3848), thence S 63°47'15" W – 143.45' to a set mag nail with washer (#3848), thence S 59°17'44" W – 81.70' to a set mag nail with washer (#3848), thence S 45°39'23" W – 69.87' to a set mag nail with washer (#3848), thence S 26°19'38" W – 66.27' to a set mag nail with washer (#3848), S 12°22'36" W – 108.03' to a set mag nail with washer (#3848), thence S 18°26'02" W – 68.69' to a set mag nail with washer (#3848), thence S 29°25'37" W – 58.11' to a set mag nail with washer (#3848), thence S 36°07'43" W – 489.20' to a set mag nail with washer (#3848) and S 46°13'13" W – 87.10' to a set mag nail with washer (#3848) and being a common corner to Asbury College (D.B. 282; P. 267, D.B. 363; P. 589), thence leaving the centerline of US 68, Harrodsburg Road and continuing with the common line of Asbury College, S 27°35'34" E – 176.17' to a point in the centerline of creek, thence S 53°55'38" E – 95.64' to a point in the centerline of creek, thence N 86°37'24" E – 126.07' to a point in the centerline of creek, thence S 88°04'52" E – 223.44' to a set iron pin and cap (#3848), thence N 78°19'18" E – 161.66' to a point in the centerline of creek, thence S 81°41'07" E – 321.62' in the centerline of creek, thence S 28°50'05" E – 37.73' to a set iron pin and cap (#3848), common corner to Tract 1 described above, thence leaving the common line of Asbury College and continuing with the common line of Tract 1, N 81°37'46" E – 474.37' to a set mag nail with washer (#3848), thence N 39°28'28" E – 33.20' to a set iron pin and cap (#3848), thence S 56°23'36" E – 224.72' to a set iron pin and cap (#3848), thence N 76°04'35" E – 115.24' to a set iron pin and cap (#3848), thence N 39°20'13" E – 19.13' to a set iron pin and cap (#3848), thence N 80°30'07" E – 308.00' to a set iron pin and cap (#3848), thence N 85°20'00" E – 318.10' to a set iron pin and cap (#3848), thence S 65°29'43" E – 206.22' to a point in the line of Robert and Mary Ann Workman (D.B. 726; P. 709, P.C. 11; Sl. 548), said line passing through a set iron pin and cap (#3848) witness corner at 206.92', thence leaving the common line of Tract 1 and continuing with the common line of Workman, N 44°57'11" E – 44.34' to found iron pin and cap (#3848), thence N 67°45'36" E – 456.87' to a found iron pin and cap (#3848), thence N 83°44'32" E – 1006.25' to a set iron pin and cap (#3848), common corner to Robert Garrison (D.B. 355; P. 80, P.C. 4; Sl. 81), thence leaving the common line of Workman and continuing with the common line of Garrison, N 16°33'16" W – 431.83' to a set iron pin and cap (#3848), common corner to Rudy L. and Patricia Medlock (D.B. 337; P. 259, P.C. 4; Sl. 81), thence leaving

iron pin and cap (#3848), thence N 06°36'24" W – 220.82' to a set iron pin and cap (#3848), thence N 85°50'33" W – 966.48' to a set iron pin and cap (#3848), thence N 11°55'43" W – 1764.70' to a set iron pin and cap (#3848), thence N 66°05'44" E – 284.75' to a set iron pin and cap (#3848), thence N 03°40'02" E – 581.46' to a set iron pin and cap (#3848), thence N 02°09'30" E – 180.65' to a set iron pin and cap (#3848), said point being a common corner to Asbury College and Tract 9 of the Bicknell Family Limited Partnership, thence leaving the common line of Asbury College and continuing with the common line of Tract 9, N 81°37'46" E – 474.37' to a set mag nail with washer (#3848), thence N 39°28'28" E – 33.20' to a set iron pin and cap (#3848), thence S 56°23'36" E – 224.72' to a set iron pin and cap (#3848), thence N 76°04'35" E – 115.24' to a set iron pin and cap (#3848), thence N 39°20'13" E – 19.13' to a set iron pin and cap (#3848), thence N 80°30'07" E – 308.00' to a set iron pin and cap (#3848), thence N 85°20'00" E – 318.10' to a set iron pin and cap (#3848), thence S 65°29'43" E – 206.22' to a point in the common line of Robert and Mary Ann Workman (D.B. 726; P. 709; P.C. 11; Sl. 548), said line passing through a set iron pin and cap (#3848) witness corner at 200.92', thence leaving the common line of Tract 9 and continuing with the common line of Workman, S 44°57'11" W – 192.02' to a found stone, thence S 14°32'48" E – 973.70' to a found iron pin and cap (#3848), said point being a common corner to Charles A. and Marcy R. Workman (D.B. 760; P. 47, P.C. 11; Sl. 548), thence continuing with the common line of Workman, S 23°40'15" E – 822.34' to a found iron pin and cap (#3848), thence N 70°43'57" E – 1466.28' to a found iron pin (No cap), said point being a common corner to Workman and Asbury Estates Subdivision, thence leaving the line of Workman and continuing with the common line of Asbury Estates Subdivision, S 32°53'33" E – 361.67' to a found fence corner, said corner being situated N 03°32'54" E – 6.36' from a set iron pin and cap (#3848) witness corner, thence N 70°35'51" E – 348.24' to a found fence post, said corner being situated N 21°48'14" E – 5.42' from a set iron pin and cap (#3848) witness corner, thence S 34°00'29" E – 865.00' to a found iron pin (No cap), said found iron pin being situated N 13°29'52" E – 1.48' from a set iron pin and cap (#3848) witness corner, thence N 55°29'23" E – 258.88' to a point, said point being situated N 04°01'13" W – 12.02' from a set iron pin and cap (#3848) witness corner, thence S 40°28'33" E – 1393.44' to a set iron pin and cap (#3848), thence S 39°36'01" E – 958.80' to a found metal post, thence S 39°33'27" E – 181.22', passing through a set iron pin and cap (#3848) witness corner at 153.06', to the beginning and containing 451.82 acres.

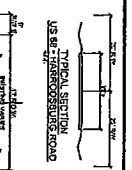
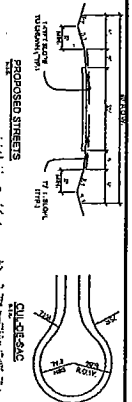
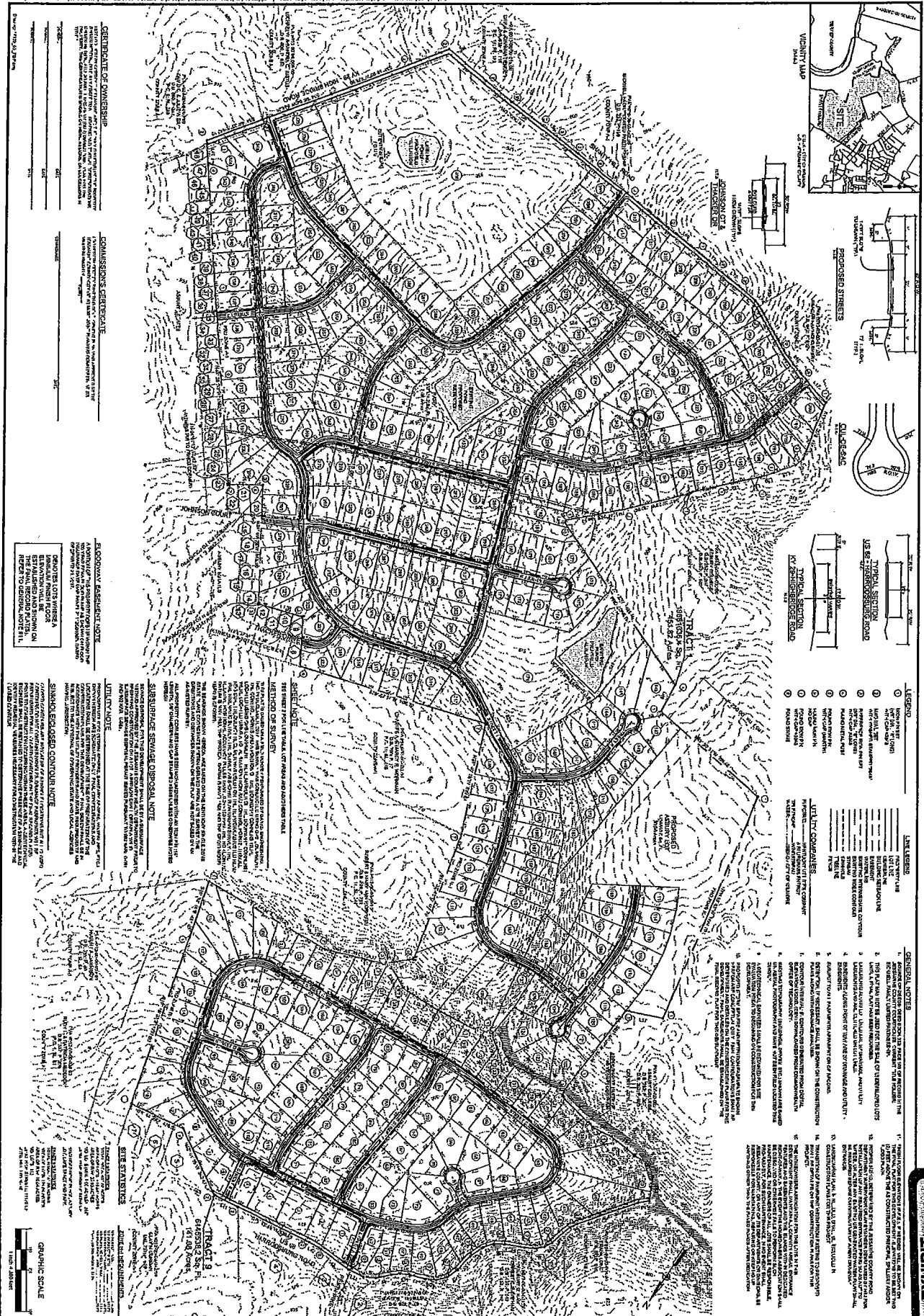
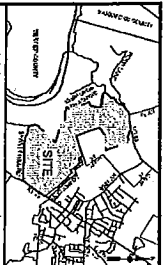
#### **TRACT 9**

Beginning at a set mag nail with washer (#3848) in the centerline of US 68, Harrodsburg Road, common corner to Christina Hahn Tyra (D.B. 352; P. 290), thence with the centerline of US 68, Harrodsburg Road, S 79°46'38" W – 196.14' to a set mag nail with washer (#3848), thence S 79°43'49" W – 590.69' to a set mag nail with washer (#3848), thence S 83°47'51" W – 85.10' to a set mag nail with washer (#3848), thence

the common line of Garrison and continuing with the common line of Medlock, N 16°18'33" W – 1287.69' to a set iron pin and cap (#3848), common corner to Charles B. and Nancy Joan Hahn (D.B. 478; P. 163), thence leaving the line of Medlock and continuing with the line of Hahn and others, S 78°54'39" W – 428.00' to a set iron pin and cap (#3848), thence N 62°01'15" W – 540.47' to the beginning and containing 141.08 acres.







- LEGEND**
- 1. PROPERTY BOUNDARIES
  - 2. EASEMENTS
  - 3. DRIVEWAYS
  - 4. DRIVEWAY EASEMENTS
  - 5. DRIVEWAY RIGHTS-OF-WAY
  - 6. DRIVEWAY RIGHTS-OF-WAY EASEMENTS
  - 7. DRIVEWAY RIGHTS-OF-WAY EASEMENTS
  - 8. DRIVEWAY RIGHTS-OF-WAY EASEMENTS
  - 9. DRIVEWAY RIGHTS-OF-WAY EASEMENTS
  - 10. DRIVEWAY RIGHTS-OF-WAY EASEMENTS
  - 11. DRIVEWAY RIGHTS-OF-WAY EASEMENTS
  - 12. DRIVEWAY RIGHTS-OF-WAY EASEMENTS
  - 13. DRIVEWAY RIGHTS-OF-WAY EASEMENTS
  - 14. DRIVEWAY RIGHTS-OF-WAY EASEMENTS
  - 15. DRIVEWAY RIGHTS-OF-WAY EASEMENTS
  - 16. DRIVEWAY RIGHTS-OF-WAY EASEMENTS
  - 17. DRIVEWAY RIGHTS-OF-WAY EASEMENTS
  - 18. DRIVEWAY RIGHTS-OF-WAY EASEMENTS
  - 19. DRIVEWAY RIGHTS-OF-WAY EASEMENTS
  - 20. DRIVEWAY RIGHTS-OF-WAY EASEMENTS
  - 21. DRIVEWAY RIGHTS-OF-WAY EASEMENTS
  - 22. DRIVEWAY RIGHTS-OF-WAY EASEMENTS
  - 23. DRIVEWAY RIGHTS-OF-WAY EASEMENTS
  - 24. DRIVEWAY RIGHTS-OF-WAY EASEMENTS
  - 25. DRIVEWAY RIGHTS-OF-WAY EASEMENTS
  - 26. DRIVEWAY RIGHTS-OF-WAY EASEMENTS
  - 27. DRIVEWAY RIGHTS-OF-WAY EASEMENTS
  - 28. DRIVEWAY RIGHTS-OF-WAY EASEMENTS
  - 29. DRIVEWAY RIGHTS-OF-WAY EASEMENTS
  - 30. DRIVEWAY RIGHTS-OF-WAY EASEMENTS

**CERTIFICATE OF ADOPTION**

THE BOARD OF COMMISSIONERS OF JESSAMINE COUNTY, KY, HAS REVIEWED THE SUBDIVISION MAP AND FINDS THAT THE SAME COMES IN ACCORDANCE WITH THE SUBDIVISION MAP ACT, AS AMENDED, AND THE SUBDIVISION MAP ACT REGULATIONS, AS ADOPTED BY THE BOARD OF COMMISSIONERS OF JESSAMINE COUNTY, KY, AND THEREFORE IT IS HEREBY ORDERED THAT THE SAME BE RECORDED IN THE OFFICE OF THE CLERK OF COURTS OF JESSAMINE COUNTY, KY.

**COMMISSIONER'S CERTIFICATE**

I, \_\_\_\_\_, Commissioner of Jessamine County, Kentucky, do hereby certify that the above and foregoing is a true and correct copy of the original as the same appears on file in the office of the County Clerk.

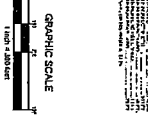
DATE: \_\_\_\_\_

**GENERAL NOTES**

1. THE PROPERTY BOUNDARIES SHOWN ON THIS MAP ARE BASED ON A SURVEY CONDUCTED BY \_\_\_\_\_.
2. THIS PLAN SHOWS THE LOCATION OF THE PROPOSED DRIVEWAYS AND EASEMENTS.
3. THE PROPOSED DRIVEWAYS AND EASEMENTS SHALL BE AS SHOWN ON THIS MAP.
4. THE PROPOSED DRIVEWAYS AND EASEMENTS SHALL BE CONSTRUCTED IN ACCORDANCE WITH THE SUBDIVISION MAP ACT, AS AMENDED, AND THE SUBDIVISION MAP ACT REGULATIONS, AS ADOPTED BY THE BOARD OF COMMISSIONERS OF JESSAMINE COUNTY, KY.
5. THE PROPOSED DRIVEWAYS AND EASEMENTS SHALL BE MAINTAINED IN ACCORDANCE WITH THE SUBDIVISION MAP ACT, AS AMENDED, AND THE SUBDIVISION MAP ACT REGULATIONS, AS ADOPTED BY THE BOARD OF COMMISSIONERS OF JESSAMINE COUNTY, KY.
6. THE PROPOSED DRIVEWAYS AND EASEMENTS SHALL BE SUBJECT TO THE SAME CONDITIONS AND RESTRICTIONS AS THE ORIGINAL PROPERTY.
7. THE PROPOSED DRIVEWAYS AND EASEMENTS SHALL BE SUBJECT TO THE SAME TAXES AND FEES AS THE ORIGINAL PROPERTY.
8. THE PROPOSED DRIVEWAYS AND EASEMENTS SHALL BE SUBJECT TO THE SAME ZONING AND REGULATIONS AS THE ORIGINAL PROPERTY.
9. THE PROPOSED DRIVEWAYS AND EASEMENTS SHALL BE SUBJECT TO THE SAME EASEMENTS AND ENCUMBRANCES AS THE ORIGINAL PROPERTY.
10. THE PROPOSED DRIVEWAYS AND EASEMENTS SHALL BE SUBJECT TO THE SAME EASEMENTS AND ENCUMBRANCES AS THE ORIGINAL PROPERTY.
11. THE PROPOSED DRIVEWAYS AND EASEMENTS SHALL BE SUBJECT TO THE SAME EASEMENTS AND ENCUMBRANCES AS THE ORIGINAL PROPERTY.
12. THE PROPOSED DRIVEWAYS AND EASEMENTS SHALL BE SUBJECT TO THE SAME EASEMENTS AND ENCUMBRANCES AS THE ORIGINAL PROPERTY.
13. THE PROPOSED DRIVEWAYS AND EASEMENTS SHALL BE SUBJECT TO THE SAME EASEMENTS AND ENCUMBRANCES AS THE ORIGINAL PROPERTY.
14. THE PROPOSED DRIVEWAYS AND EASEMENTS SHALL BE SUBJECT TO THE SAME EASEMENTS AND ENCUMBRANCES AS THE ORIGINAL PROPERTY.
15. THE PROPOSED DRIVEWAYS AND EASEMENTS SHALL BE SUBJECT TO THE SAME EASEMENTS AND ENCUMBRANCES AS THE ORIGINAL PROPERTY.
16. THE PROPOSED DRIVEWAYS AND EASEMENTS SHALL BE SUBJECT TO THE SAME EASEMENTS AND ENCUMBRANCES AS THE ORIGINAL PROPERTY.
17. THE PROPOSED DRIVEWAYS AND EASEMENTS SHALL BE SUBJECT TO THE SAME EASEMENTS AND ENCUMBRANCES AS THE ORIGINAL PROPERTY.
18. THE PROPOSED DRIVEWAYS AND EASEMENTS SHALL BE SUBJECT TO THE SAME EASEMENTS AND ENCUMBRANCES AS THE ORIGINAL PROPERTY.
19. THE PROPOSED DRIVEWAYS AND EASEMENTS SHALL BE SUBJECT TO THE SAME EASEMENTS AND ENCUMBRANCES AS THE ORIGINAL PROPERTY.
20. THE PROPOSED DRIVEWAYS AND EASEMENTS SHALL BE SUBJECT TO THE SAME EASEMENTS AND ENCUMBRANCES AS THE ORIGINAL PROPERTY.

**ADDITIONAL NOTES**

The proposed driveways and easements shall be subject to the same conditions and restrictions as the original property. The proposed driveways and easements shall be subject to the same taxes and fees as the original property. The proposed driveways and easements shall be subject to the same zoning and regulations as the original property. The proposed driveways and easements shall be subject to the same easements and encumbrances as the original property.



SHEET	5/10/2021
	REVISION
DATE	17132
	ADS
BY	JOB

121 JESSIE B. STONE ROAD, COTTAGEVILLE, KY 40304 | 606-338-2200

**BICKNELL FARM SUBDIVISION**

WILMORE, JESSAMINE COUNTY, KENTUCKY  
US 60 - HARRODSBURG ROAD AND KY 26 - HIGHBRIDGE ROAD

**FINAL DEVELOPMENT PLAN**

**OWNER**  
BICKNELL FAMILY LIMITED PARTNERSHIP  
P.O. BOX 102, WILMORE, KY 40390

**DEVELOPER**  
NAME  
STREET CITY STATE, ZIP

EXHIBIT

B

606-639-0008 (TOLL FREE)

ANNEXATION BOUNDARY  
BICKNELL FAMILY LIMITED PARTNERSHIP  
TRACT 1 AND TRACT 9  
DEED BOOK 333; PAGE 169

US 68 – HARRODSBURG ROAD & KY 29 – HIGH BRIDGE ROAD

**TRACT 1**

Beginning at a set mag nail with washer (#3848) in the centerline of KY 29, High Bridge Road, common corner to Asbury Estates Subdivision, thence with the centerline of KY 29, High Bridge Road, S 34°16'33" W – 442.10' to a set mag nail with washer (#3848), thence S 34°08'04" W – 548.05' to a set mag nail with washer (#3848), thence S 33°58'09" W – 628.99' to a set mag nail with washer (#3848) and S 33°53'32" W – 327.50' to a set mag nail with washer (#3848) at the centerline intersection of KY 29, High Bridge Road and Shanty Hill Road, thence leaving the centerline of KY 29, High Bridge Road and continuing with the centerline of Shanty Hill Road, N 85°33'52" W – 358.26" to a set mag nail with washer (#3848), thence N 86°43'47" W – 247.86' to a set mag nail with washer (#3848), thence N 88°50'32" W – 288.78' to a set mag nail with washer (#3848), thence S 89°49'56" W – 131.53' to a set mag nail with washer (#3848), thence N 87°35'41" W – 206.56' to a set mag nail with washer (#3848), thence N 87°28'59" W – 192.87' to a set mag nail with washer (#3848), thence N 88°32'48" W – 279.58' to a set mag nail with washer (#3848), thence N 86°42'17" W – 400.12' to a set mag nail with washer (#3848), thence N 88°11'33" W – 315.34' to a set mag nail with washer (#3848), thence N 85°55'25" W – 193.67' to a set mag nail with washer (#3848), thence N 88°19'46" W – 229.43' to a set mag nail with washer (#3848), thence N 86°13'50" W – 132.28' to a set mag nail with washer (#3848), thence N 73°21'25" W – 52.52' to a set mag nail with washer (#3848), thence N 65°35'14" W – 382.41' to a set mag nail with washer (#3848), thence N 72°41'21" W – 205.52' to a set mag nail with washer (#3848), thence N 77°13'05" W – 283.50' to a set iron pin and cap (#3848), thence leaving the centerline of Shanty Hill Road and continuing with the common line of Asbury College (D.B. 282; P. 267, D.B. 363; P. 589), N 13°54'20" W – 448.05' to a found metal post, thence N 15°30'58" E – 69.90' to a metal post, thence N 34°49'14" E – 172.25' to a set iron pin and cap (#3848), thence N 38°05'58" E – 101.62' to a set iron pin and cap (#3848), thence N 43°03'53" E – 74.56' to a set iron pin and cap (#3848), thence N 42°39'55" E – 265.77' to a set iron pin and cap (#3848), thence N 41°17'39" E – 187.59' to a set iron pin and cap (#3848), thence N 29°14'03" E – 44.12' to a set iron pin and cap (#3848), thence N 41°35'23" E – 487.50' to a set iron pin and cap (#3848), thence N 43°44'23" E – 466.99' to a set iron pin and cap (#3848), thence N 25°45'08" W – 14.59' to a set iron pin and cap (#3848), thence N 71°37'12" W – 1465.46' to a set

266.50

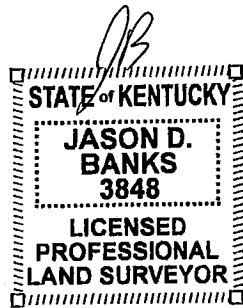
S 89°28'46" W – 369.50' to a set mag nail with washer (#3848), thence S 79°14'57" W – 127.88' to a set mag nail with washer (#3848), thence S 58°17'29" W – 97.59' to a set mag nail with washer (#3848), thence S 42°51'20" W – 120.32' to a set mag nail with washer (#3848), thence S 48°39'32" W – 61.55' to a set mag nail with washer (#3848), thence S 60°22'35" W – 83.53' to a set mag nail with washer (#3848), thence S 68°43'39" W – 118.64' to a set mag nail with washer (#3848), thence S 60°27'04" W – 81.07' to a set mag nail with washer (#3848), thence S 39°59'12" W – 88.13' to a set mag nail with washer (#3848), thence S 19°29'04" W – 86.90' to a set mag nail with washer (#3848), thence S 07°55'18" W – 136.76' to a set mag nail with washer (#3848), thence S 19°10'40" W – 116.25' to a set mag nail with washer (#3848), thence S 37°19'01" W – 82.79' to a set mag nail with washer (#3848), thence S 55°14'46" W – 86.07' to a set mag nail with washer (#3848), thence S 63°47'15" W – 143.45' to a set mag nail with washer (#3848), thence S 59°17'44" W – 81.70' to a set mag nail with washer (#3848), thence S 45°39'23" W – 69.87' to a set mag nail with washer (#3848), thence S 26°19'38" W – 66.27' to a set mag nail with washer (#3848), S 12°22'36" W – 108.03' to a set mag nail with washer (#3848), thence S 18°26'02" W – 68.69' to a set mag nail with washer (#3848), thence S 29°25'37" W – 58.11' to a set mag nail with washer (#3848), thence S 36°07'43" W – 489.20' to a set mag nail with washer (#3848) and S 46°13'13" W – 87.10' to a set mag nail with washer (#3848) and being a common corner to Asbury College (D.B. 282; P. 267, D.B. 363; P. 589), thence leaving the centerline of US 68, Harrodsburg Road and continuing with the common line of Asbury College, S 27°35'34" E – 176.17' to a point in the centerline of creek, thence S 53°55'38" E – 95.64' to a point in the centerline of creek, thence N 86°37'24" E – 126.07' to a point in the centerline of creek, thence S 88°04'52" E – 223.44' to a set iron pin and cap (#3848), thence N 78°19'18" E – 161.66' to a point in the centerline of creek, thence S 81°41'07" E – 321.62' in the centerline of creek, thence S 28°50'05" E – 37.73' to a set iron pin and cap (#3848), common corner to Tract 1 described above, thence leaving the common line of Asbury College and continuing with the common line of Tract 1, N 81°37'46" E – 474.37' to a set mag nail with washer (#3848), thence N 39°28'28" E – 33.20' to a set iron pin and cap (#3848), thence S 56°23'36" E – 224.72' to a set iron pin and cap (#3848), thence N 76°04'35" E – 115.24' to a set iron pin and cap (#3848), thence N 39°20'13" E – 19.13' to a set iron pin and cap (#3848), thence N 80°30'07" E – 308.00' to a set iron pin and cap (#3848), thence N 85°20'00" E – 318.10' to a set iron pin and cap (#3848), thence S 65°29'43" E – 206.22' to a point in the line of Robert and Mary Ann Workman (D.B. 726; P. 709, P.C. 11; Sl. 548), said line passing through a set iron pin and cap (#3848) witness corner at 206.92', thence leaving the common line of Tract 1 and continuing with the common line of Workman, N 44°57'11" E – 44.34' to found iron pin and cap (#3848), thence N 67°45'36" E – 456.87' to a found iron pin and cap (#3848), thence N 83°44'32" E – 1006.25' to a set iron pin and cap (#3848), common corner to Robert Garrison (D.B. 355; P. 80, P.C. 4; Sl. 81), thence leaving the common line of Workman and continuing with the common line of Garrison, N 16°33'16" W – 431.83' to a set iron pin and cap (#3848), common corner to Rudy L. and Patricia Medlock (D.B. 337; P. 259, P.C. 4; Sl. 81), thence leaving

iron pin and cap (#3848), thence N 06°36'24" W – 220.82' to a set iron pin and cap (#3848), thence N 85°50'33" W – 966.48' to a set iron pin and cap (#3848), thence N 11°55'43" W – 1764.70' to a set iron pin and cap (#3848), thence N 66°05'44" E – 284.75' to a set iron pin and cap (#3848), thence N 03°40'02" E – 581.46' to a set iron pin and cap (#3848), thence N 02°09'30" E – 180.65' to a set iron pin and cap (#3848), said point being a common corner to Asbury College and Tract 9 of the Bicknell Family Limited Partnership, thence leaving the common line of Asbury College and continuing with the common line of Tract 9, N 81°37'46" E – 474.37' to a set mag nail with washer (#3848), thence N 39°28'28" E – 33.20' to a set iron pin and cap (#3848), thence S 56°23'36" E – 224.72' to a set iron pin and cap (#3848), thence N 76°04'35" E – 115.24' to a set iron pin and cap (#3848), thence N 39°20'13" E – 19.13' to a set iron pin and cap (#3848), thence N 80°30'07" E – 308.00' to a set iron pin and cap (#3848), thence N 85°20'00" E – 318.10' to a set iron pin and cap (#3848), thence S 65°29'43" E – 206.22' to a point in the common line of Robert and Mary Ann Workman (D.B. 726; P. 709; P.C. 11; Sl. 548), said line passing through a set iron pin and cap (#3848) witness corner at 200.92', thence leaving the common line of Tract 9 and continuing with the common line of Workman, S 44°57'11" W – 192.02' to a found stone, thence S 14°32'48" E – 973.70' to a found iron pin and cap (#3848), said point being a common corner to Charles A. and Marcy R. Workman (D.B. 760; P. 47, P.C. 11; Sl. 548), thence continuing with the common line of Workman, S 23°40'15" E – 822.34' to a found iron pin and cap (#3848), thence N 70°43'57" E – 1466.28' to a found iron pin (No cap), said point being a common corner to Workman and Asbury Estates Subdivision, thence leaving the line of Workman and continuing with the common line of Asbury Estates Subdivision, S 32°53'33" E – 361.67' to a found fence corner, said corner being situated N 03°32'54" E – 6.36' from a set iron pin and cap (#3848) witness corner, thence N 70°35'51" E – 348.24' to a found fence post, said corner being situated N 21°48'14" E – 5.42' from a set iron pin and cap (#3848) witness corner, thence S 34°00'29" E – 865.00' to a found iron pin (No cap), said found iron pin being situated N 13°29'52" E – 1.48' from a set iron pin and cap (#3848) witness corner, thence N 55°29'23" E – 258.88' to a point, said point being situated N 04°01'13" W – 12.02' from a set iron pin and cap (#3848) witness corner, thence S 40°28'33" E – 1393.44' to a set iron pin and cap (#3848), thence S 39°36'01" E – 958.80' to a found metal post, thence S 39°33'27" E – 181.22', passing through a set iron pin and cap (#3848) witness corner at 153.06', to the beginning and containing 451.82 acres.

## **TRACT 9**

Beginning at a set mag nail with washer (#3848) in the centerline of US 68, Harrodsburg Road, common corner to Christina Hahn Tyra (D.B. 352; P. 290), thence with the centerline of US 68, Harrodsburg Road, S 79°46'38" W – 196.14' to a set mag nail with washer (#3848), thence S 79°43'49" W – 590.69' to a set mag nail with washer (#3848), thence S 83°47'51" W – 85.10' to a set mag nail with washer (#3848), thence

the common line of Garrison and continuing with the common line of Medlock, N 16°18'33" W – 1287.69' to a set iron pin and cap (#3848), common corner to Charles B. and Nancy Joan Hahn (D.B. 478; P. 163), thence leaving the line of Medlock and continuing with the line of Hahn and others, S 78°54'39" W – 428.00' to a set iron pin and cap (#3848), thence N 62°01'15" W – 540.47' to the beginning and containing 141.08 acres.



11-12-21

OVERSIZE MAP INCLUDED WITH  
SUBMISSION.

To research the map, contact the  
Office of Secretary of State  
or the County Clerk.